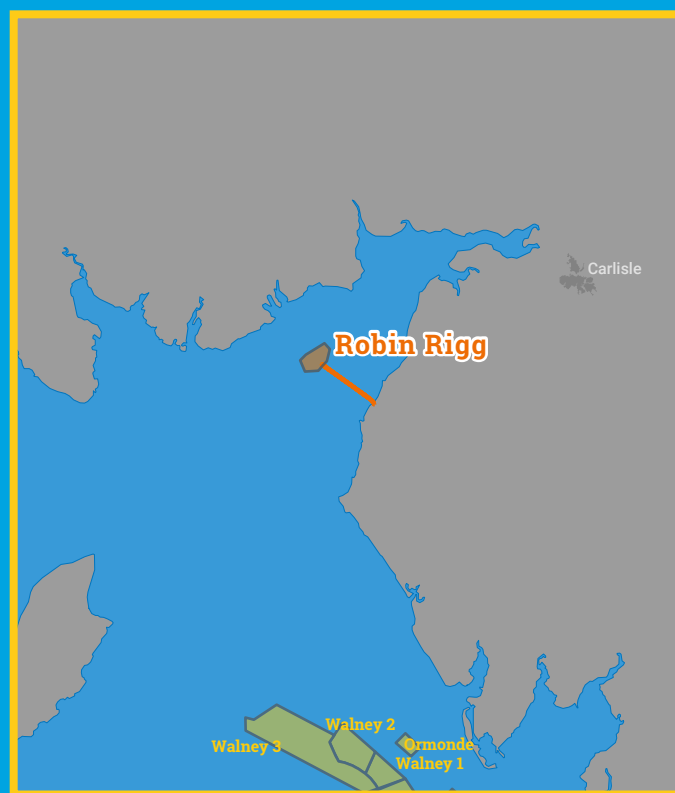




Kingfisher Wind farm Chart



Robin Rigg
Offshore wind farm
January 2023

 **KIS-ORCA**
Emergency contact number
+44(0)845 3014711

Description

The Robin Rigg Offshore Wind Farm is operated by RWE Renewables. It is situated approximately 11 km from shore in the Northern Irish Sea, in the outer Solway Firth. The wind farm is fully operational and has 58 turbines, a total capacity of 174 MW and covers an area of approximately 18 km².

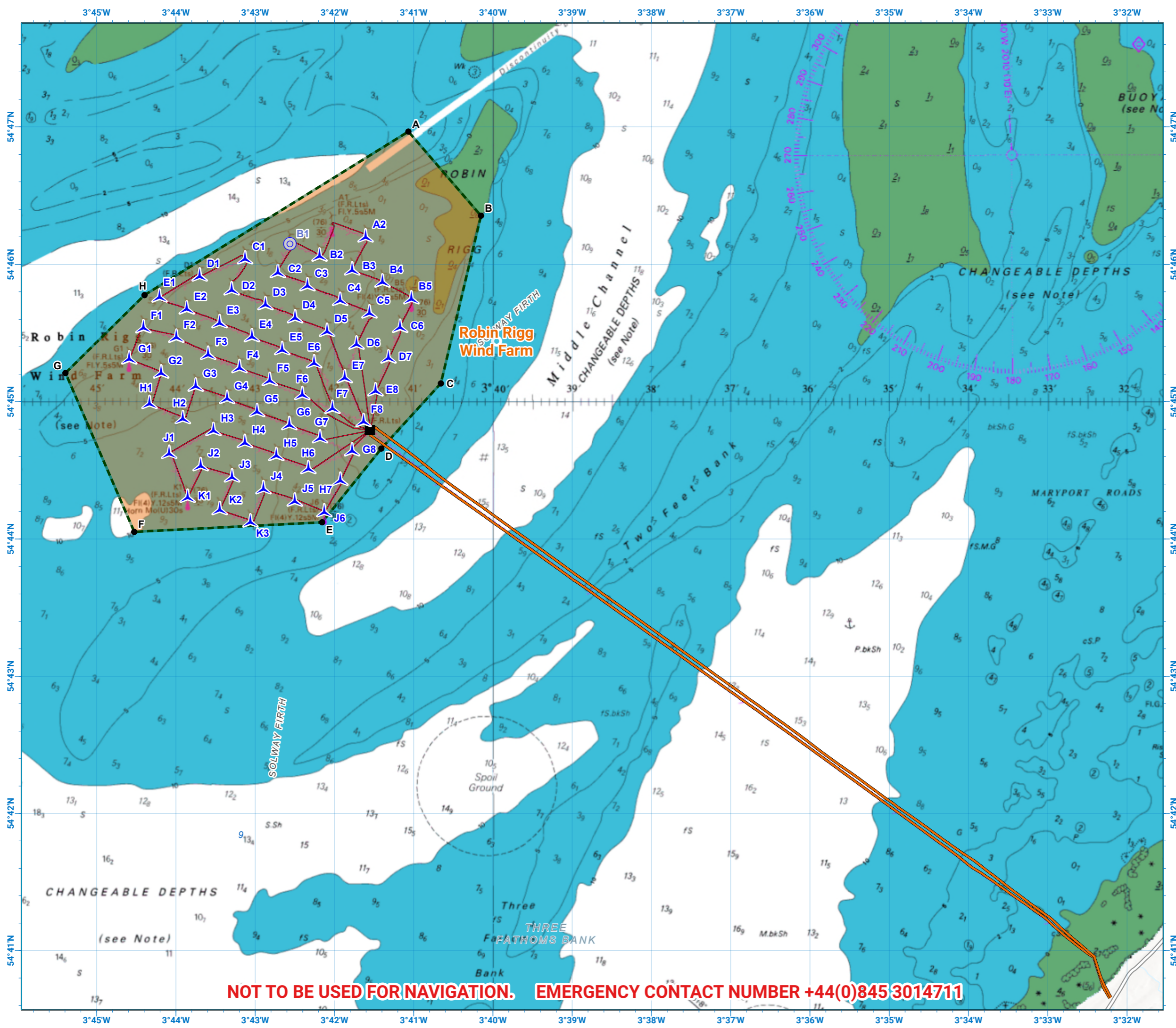
Emergency procedures

1. If you suspect you have snagged a subsea cable or renewable energy structure, DO NOT endanger your vessel and crew by attempting to recover your gear.
2. Carefully plot your vessel's position as accurately as possible.
3. Advise the Coastguard of your situation, and call the 24 hour Emergency Number and state that an incident is occurring concerning a subsea cable or renewable energy structure.

Reducing the risks whilst fishing

To reduce the risks of fishing near offshore structures, it is essential to be up to date with KIS-ORCA information. KIS-ORCA information is easy to install on your vessel's fishing plotter and ensures skippers are able to make informed decisions for their safety.

The closer to the surface a subsea cable is lifted when fouled by fishing gear, the more danger there is to the fishing vessel. In the interests of fishing safety and to prevent damage to subsea structures, fishermen are advised to exercise caution when fishing in the vicinity of subsea cables and renewable energy structures. Loss of gear, fishing time and catch can result if a trawler snags a subsea structure and there is serious risk of loss of life.



NOT TO BE USED FOR NAVIGATION. EMERGENCY CONTACT NUMBER +44(0)845 3014711



**Robin Rigg
Offshore Wind Farm**

- Site boundary
- Wind turbine
- Substation
- Turbine foundation
- Export cable
- Inter array cable

Grey coloured features displayed on this chart represent additional offshore wind farm structures. Visit www.kis-orca.org/map for more info.

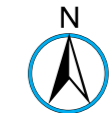
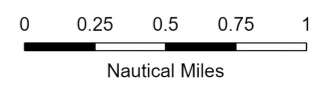


Projection: World_Mercator
Spheroid: GCS_WGS_1984
Datum: D_WGS_1984

This data is issued as a guide only.
Seafish, cable / structure owners and Distributors
accept no responsibility for any inaccuracies
however caused.

Please be aware that other structures & cables
may exist in addition to those shown on this chart.

© British Crown and OceanWise, 2022/23.
All rights reserved. License No. EK001-20190327.
Not to be used for Navigation.



Scale @ A3:
1:50,000

Asset locations

Extents		Extents		Infrastructure	
A	54°46.966'N 03°41.067'W	G	54°45.209'N 03°45.394'W	SUBSTATION	54°44.793'N 03°41.552'W
B	54°46.354'N 03°40.151'W	H	54°45.776'N 03°44.396'W	Decommissioned turbine (B1)	54°46.150'N 03°42.560'W
C	54°45.133'N 03°40.657'W				
D	54°44.659'N 03°41.408'W				
E	54°44.122'N 03°42.155'W				
F	54°44.052'N 03°44.526'W				

Turbines		Turbines	
A2	54°46.195'N 03°41.607'W	F5	54°45.150'N 03°42.816'W
B2	54°46.056'N 03°42.188'W	F6	54°45.048'N 03°42.405'W
B3	54°45.955'N 03°41.776'W	F7	54°44.947'N 03°42.025'W
B4	54°45.867'N 03°41.394'W	F8	54°44.851'N 03°41.632'W
B5	54°45.745'N 03°41.029'W	G1	54°45.307'N 03°44.589'W
C1	54°46.035'N 03°43.127'W	G2	54°45.205'N 03°44.186'W
C2	54°45.936'N 03°42.714'W	G3	54°45.109'N 03°43.750'W
C3	54°45.840'N 03°42.340'W	G4	54°45.019'N 03°43.354'W
C4	54°45.733'N 03°41.928'W	G5	54°44.924'N 03°42.976'W
C5	54°45.642'N 03°41.558'W	G6	54°44.829'N 03°42.569'W
C6	54°45.537'N 03°41.171'W	G7	54°44.733'N 03°42.182'W
D1	54°45.911'N 03°43.700'W	G8	54°44.638'N 03°41.777'W
D2	54°45.810'N 03°43.297'W	H1	54°44.983'N 03°44.333'W
D3	54°45.702'N 03°42.870'W	H2	54°44.873'N 03°43.913'W
D4	54°45.607'N 03°42.496'W	H3	54°44.786'N 03°43.526'W
D5	54°45.508'N 03°42.093'W	H4	54°44.699'N 03°43.130'W
D6	54°45.415'N 03°41.721'W	H5	54°44.604'N 03°42.733'W
D7	54°45.314'N 03°41.318'W	H6	54°44.509'N 03°42.329'W
E1	54°45.758'N 03°44.207'W	H7	54°44.424'N 03°41.925'W
E2	54°45.671'N 03°43.863'W	J1	54°44.620'N 03°44.085'W
E3	54°45.571'N 03°43.449'W	J2	54°44.530'N 03°43.688'W
E4	54°45.469'N 03°43.041'W	J3	54°44.448'N 03°43.292'W
E5	54°45.375'N 03°42.659'W	J4	54°44.362'N 03°42.896'W
E6	54°45.279'N 03°42.256'W	J5	54°44.272'N 03°42.500'W
E7	54°45.170'N 03°41.870'W	J6	54°44.194'N 03°42.128'W
E8	54°45.075'N 03°41.482'W	K1	54°44.300'N 03°43.852'W
F1	54°45.534'N 03°44.410'W	K2	54°44.210'N 03°43.448'W
F2	54°45.465'N 03°43.995'W	K3	54°44.120'N 03°43.060'W
F3	54°45.341'N 03°43.593'W		
F4	54°45.244'N 03°43.198'W		



Contact us

- +44 (0) 1472 252 300
- kingfisher@seafish.co.uk
- @kingfisherinfo
- @KingfisherInformation
- www.kis-orca.org

